











TOP LED

FEATURES

- Package : White P-LCC Package 3.2(L)×2.8(W)×1.9(T)mm Size
- Flat-top or Lens type
- Available of Automounting Use
- Application
 - Traffic lights
 - Backlightings (LCD, Switches, Keys,Displays ect.)
 - Interior and Exterior automotive Lighting
 - Marker Lights
 - Signal and Symbol Luminaire

PRODUCT TYPE DESIGNATION METEOD

\bigcirc S \bigcirc \bigcirc \bigcirc \bigcirc - \bigcirc
 (a) (b) (c) (d) (e) (f)

① OPTOHITEC S,C TOP LED										
② COLOR of LED Chip										
	Blue	Bluish Green	Pure Green	Green	Yellow Green	Yellow	Orange	Amber	Red	White
	B	BG	PG	G	M	Y	O	A	R	W
③ Package size (W×L×T)	3.5 × 2.8 × 1.9									
	32									
④ Package type	Round					Flat				
	R					F				
⑤ Color of Lens	Water clear		Colored Clear			Milky Diffused		Colored Diffused		
	1		2			3		4		
⑥ Luminous Intensity	General		High			Super		Ultra		
	G		H			S		U		

RATINGS AND CHARACTERISTIC

(Ta=25°C)

Color	Absolute Maximum Ratings					Electrical/Optical Characteristic					
	DC Forward Current	Reverse Voltage	Power Dissipation	Operating Temperature	Storage Temperature	Forward Voltage (IF)			Reverse Current (IR)		Dominant Wave Length (λD)
	IF	VR	PD	Topr	Tstg	TYP.	MAX.	IF	MAX.	VR	MAX.
White	25	5	75	-25~85	-30~100	3.7	4.0	20	10	5	x=0.31, cy=0.32
Blue						3.7	4.0	20	10	5	430
Bluish Green						3.7	4.0	20	10	5	470
Pure Green						3.4	4.0	20	10	5	505
Yellow Green						3.4	4.0	20	10	5	525
Yellow						2.1	2.7	20	10	5	570
Orange						1.9	2.4	20	10	5	589
Amber						1.9	2.4	20	10	5	595
Red						2.1	2.5	20	10	5	610
						2.1	2.5	20	10	5	625
						2.1	2.5	20	10	5	630
						1.8	2.4	20	10	5	660
						1.8	2.4	20	10	5	700
Unit	mA	V	mW	°C	°C	V		mA	μA	V	nm

TOP LED

PRODUCT GUIDANCE

Size	Product Name	Lens Color	λp (nm)	Luminous Intensity Iv (mcd)						IF (mA)	
				Rank (Min.)							
3.2×2.8 ×1.9T	OSW32F1-○	Options	$c_x=0.31, c_y=0.32$	Min.80	80	120	160	200	240	280	20
	OSB32F1-○		430	Min.20	20	40	60	80	100		
	OSB32F1-○		470	Min.40	40	80	160	200			
	OSBG32F1-○		505	Min.120	120	200	240	300			
	OSPG32F1-○		525	Min.20	20	40	60	80			
	OSM32F1-○		570	Min.40	40	80	120	160	200		
	OSY32F1-○		589	Min.20	20	60	80	120	140		
	OSY32F1-○		595	Min.20	20	60	120	180	240	300	
	OS032F1-○		610	Min.20	20	60	120	180	220	280	
	OS032F1-○		625	Min.20	20	100	160	200			
	OSA32F1-○		630	Min.40	40	60	100				
	OSR32F1-○		660	Min.40	40	60	80				
	OSR32F1-○		700	Min.20	20	40	60	80			

Package Dimensions

fig.1 3.5x2.8x3.4T(Round type)

Polarity $\overset{1}{\text{—}} \rightarrow \overset{2}{\text{—}}$

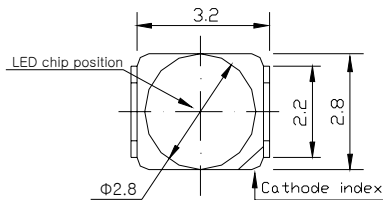
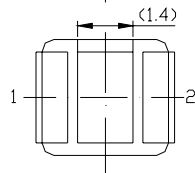
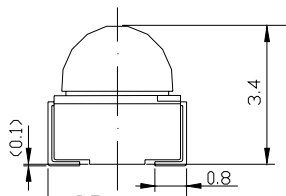
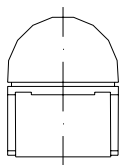
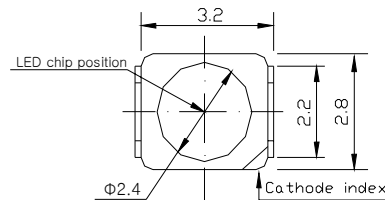


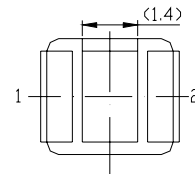
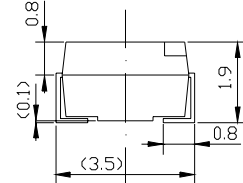
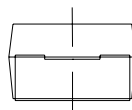
fig.2 3.5x2.8x1.9T(Flat type)

Polarity $\overset{1}{\text{—}} \rightarrow \overset{2}{\text{—}}$



1. Anode
2. Cathode

Tolerance: ± 0.2 mm



1. Anode
2. Cathode

Tolerance: ± 0.2 mm